

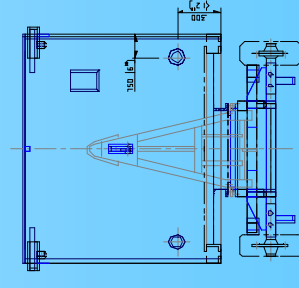
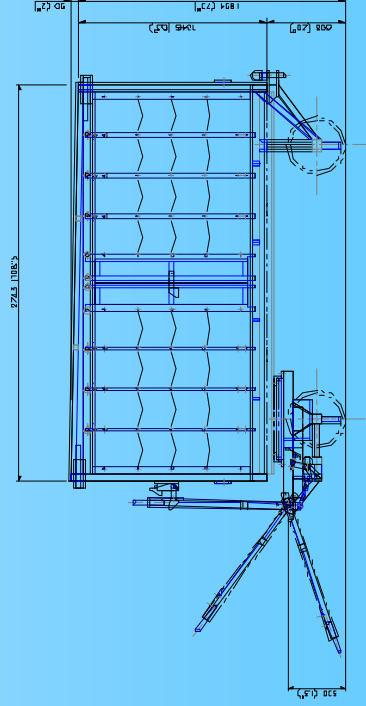
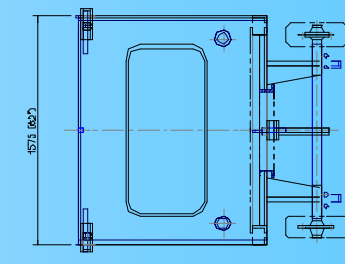


BAGGAGE TROLLEY



Specification

Payload	2,500 kg
Steering System	Turntable
Towing Speed	40 km/h
Parking Brake	Tow Bar Actuated
O/A Height	1,905 mm
O/A Length	2,473 mm
O/A Width	1,575 mm
Body Base Height	610 mm
Min. Towing Height	300 mm
Tires (U-Lug)	Solid Cushion Type
Coupling System	Tow Hitch



BAGGAGE TROLLEY



GENERAL

The AEREX baggage trolley specifications are for a standard version. Baggage Trolley can be tailored to meet individual requirement.

The trolley is designed for transportation of baggage and light cargo with a minimum payload of 2500 kg.

The trolley is rugged and is suitable and treated for outdoor use.

The design is suitable to be towed (up to 4 trolleys) at 40 km/h on bitumen Roads.

TECHNICAL DATA FOR AEREX BAGGAGE TROLLEY

	SPECIFICATION
Unladen Weight Payload	1,000 kg (approx.) 2,500 kg
Steering System	Tow bar on ball race type turn able
Towing Speed	40 km/h
Parking Brakes	Tow bar actuated
Overall Dimensions: ● Length ● Width ● Height	2,473 mm 1,575 mm 1,905 mm
Minimum Towing Height	30 mm from ground
Tyre (U-Lug)	Pneumatic Tyres

UMW ADVANTECH SDN. BHD.
AEREX GSE – Sales, Marketing & Manufacturing
Jalan Utas 15/7, 40915 Shah Alam,
Selangor , MALAYSIA.
Tel: +603 5163 5000
Fax: +603 5510 4381
Website: www.umw-advantech.com

